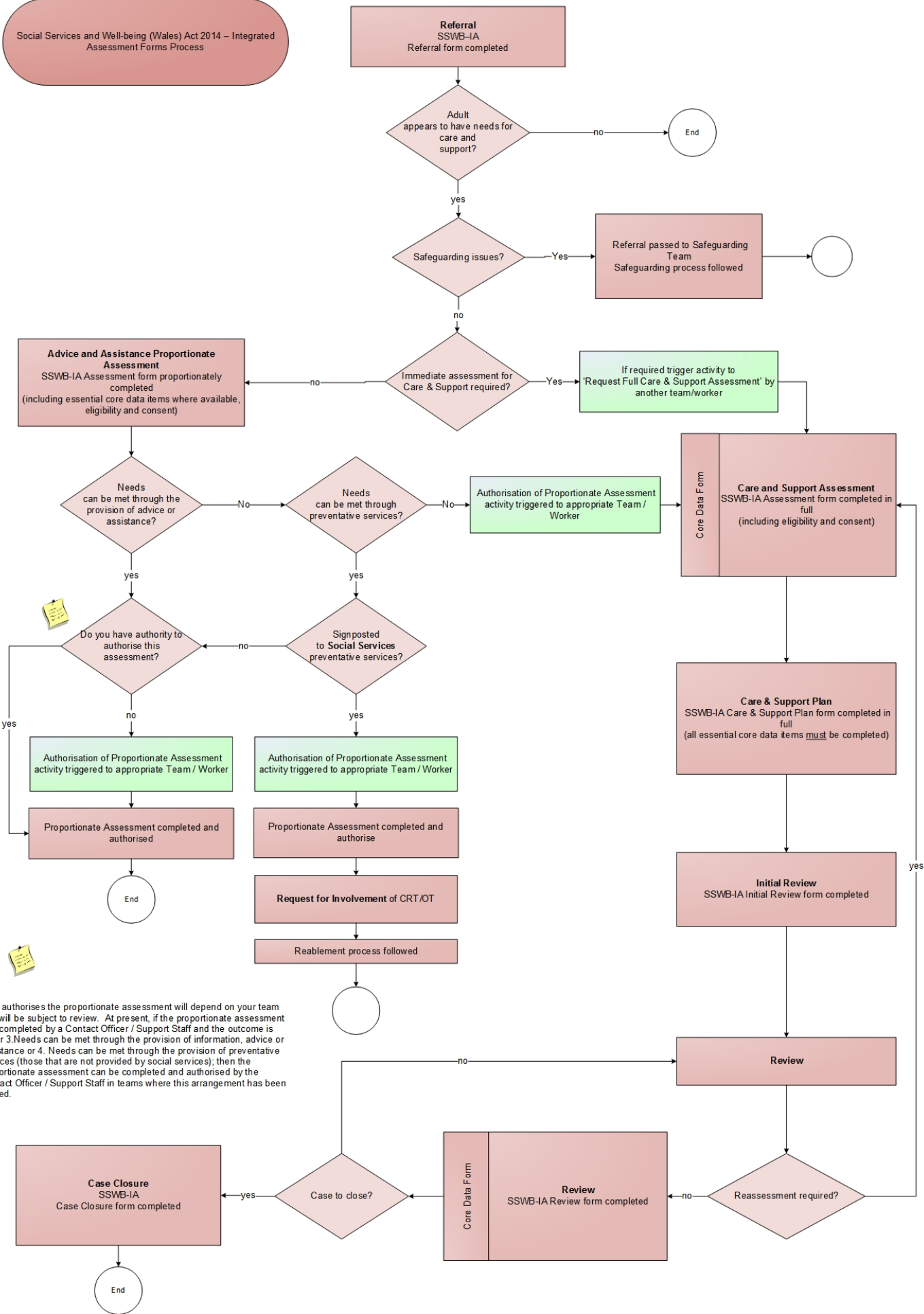


Social Services and Well-being (Wales) Act 2014 – Integrated Assessment Forms Process



Who authorises the proportionate assessment will depend on your team and will be subject to review. At present, if the proportionate assessment was completed by a Contact Officer / Support Staff and the outcome is either 3. Needs can be met through the provision of information, advice or assistance or 4. Needs can be met through the provision of preventative services (those that are not provided by social services); then the proportionate assessment can be completed and authorised by the Contact Officer / Support Staff in teams where this arrangement has been agreed.